

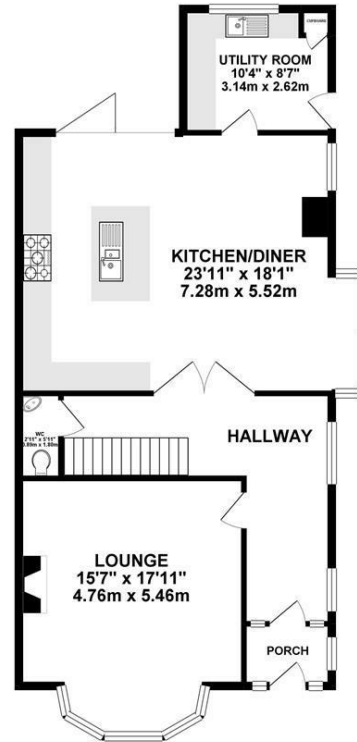
With no onward chain! This generous, four bedroom semi-detached family home is centrally located to the northern end of Osborne Road, Jesmond. Within striking distance to the shops and cafés of Acorn Road, West Jesmond Primary School, the tennis club, swimming baths, Jesmond Dene and West Jesmond Metro Station, a great location for family buyers.

Boasting over 1,800 Sq ft over two floors, the property briefly comprises: entrance porch through to hallway: lounge to the front with feature fireplace and bay window; ground floor WC with automatic lighting; 23ft kitchen/ diner to the rear; complete with Travertine tiled flooring, fitted kitchen with breakfasting island and bi-fold doors out into the rear garden; utility room with side door access to the driveway. The first floor, accessed via bright and airy staircase and landing, comprises: four double bedrooms; bedroom one with bay window, fitted wardrobes and a shower room ensuite; bedrooms two and three also with fitted wardrobe space; family bathroom. Externally, a garden to the rear with decking, driveway parking for two cars and a detached garage. With no onward chain, early viewings are essential

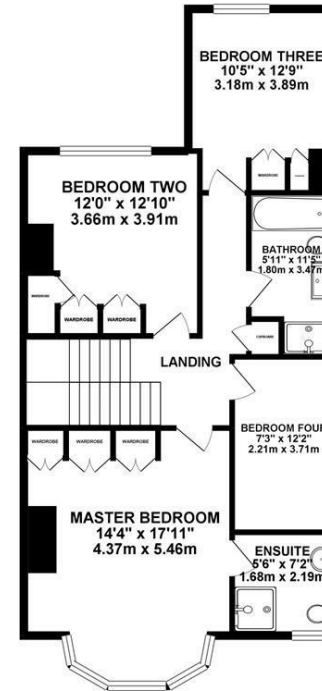
Semi Detached Family Home | | 1,831 Sq. Ft (170.2 m2) | Four Double Bedrooms | Lounge | Kitchen/ Diner | Family Bathroom | WC EnSuite | Period Features | Underfloor Heating | Rear Garden | Garage | Excellent Location | DG & GCH | No Onward Chain | Council Tax Band: E | EPC Rating: D



GROUND FLOOR 970.15 sq. ft. (90.13 sq. m.)



1ST FLOOR 861.71 sq. ft. (80.06 sq. m.)



TOTAL FLOOR AREA : 1831.86 sq. ft. (170.18 sq. m.) approx.

Whilst every effort has been made to ensure the accuracy of the floorplan contained here, measurements of doors, windows, rooms and any other items are approximate and no responsibility is taken for any error, omission or mis-statement. This plan is for illustrative purposes only and should be used as such by any prospective purchaser. The services, systems and appliances shown have not been tested and no guarantee as to their operability or efficiency can be given. Made with Hesigns ©2019



Offers Over £675,000

IMPORTANT NOTE: These particulars and the descriptions and measurements herein do not constitute representation and whilst every effort has been made to ensure accuracy, this cannot be guaranteed.

